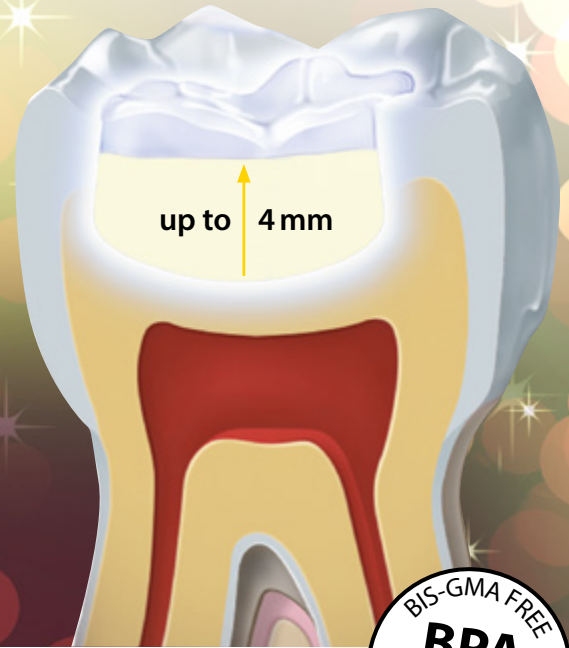


Capo Bulk Fill Plus

CAPO BULK FILL
plus
Synthetics

Quick, Easy and Safe





No additional layer necessary*

Capo Bulk Fill Plus

Work more quickly and more easily than ever before without compromising the physical properties.

Saves time with layers of up to 4 mm.

Capo Bulk Fill is a light-curing composite for posterior restorations in the direct filling technique and for the "Bulk Fill"-technique. This quick and easy method is suitable for layers with a thickness of up to 4 mm. The stable flow material adapts really well to the bottom and walls of the cavity.

Indications:

- Fillings with layer thicknesses of up to 4 mm in Black's class I cavities.
- Base fillings/liners with layer thicknesses up to 4 mm in Black's class II cavities. For the final layer in a class II cavity only use composites which are suited to filling Black's class II cavities.
- Cavity lining – as a first (bottom) layer in Black's class I and II cavities.

Your benefits:

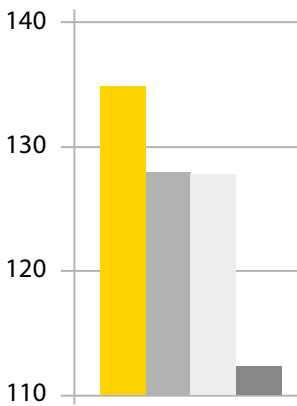
- Biocompatible: 100 % free of Bis-GMA, HEMA and TEGDMA
- **Outstanding** physical properties
- **Excellent** flow behavior
- Natural **fluorescence**
- No additional layers are necessary to cover class I cavities.
- **Quick and easy** to work with, **easy to polish**
- Minimal shrinkage provides for a **very safe application**
- High radiopacity (210 % Al) ensures a **dependable diagnosis** between the filling material and the natural tooth substance
- **Independent:** compatible with most bonding and composite systems
- **Made in Germany**

Scientifically tested by renowned institutions

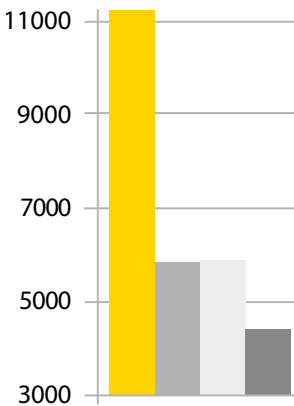


Physical tests

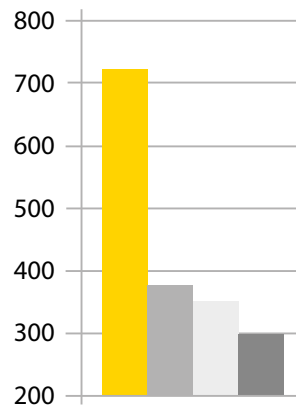
3-point-bending-strength (MPa)



Young's modulus (MPa)



Vickers hardness (MPa)



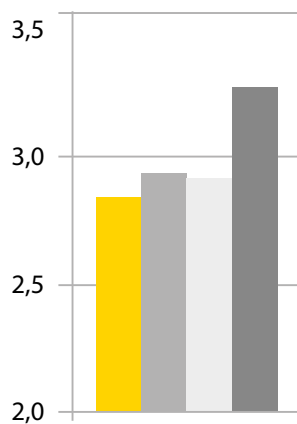
- Capo Bulk Fill Plus (Schütz Dental GmbH)
- Competitor 1
- Competitor 2
- Competitor 3

Source: Fraunhofer Institut für Keramische Technologien und Systeme, Dresden/Germany, September 2012

Volume shrinkage test

Measuring the volume shrinkage at 37°C by initializing with blue-light.

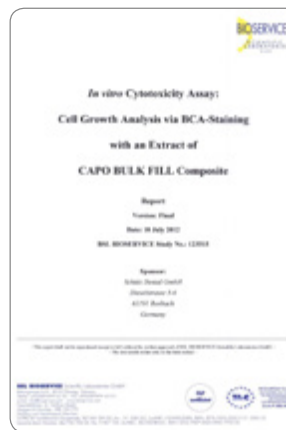
Total average shrinkage (%)



Source: InnoMat GmbH, Teltow/Germany, 07.09.2012

Cytotoxicity test

"In this study under the given conditions no leachable substances were released in cytotoxic concentrations from the test items."

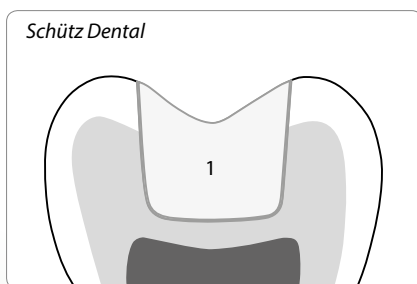


The test showed that Capo Bulk Fill Plus has no cytotoxic effects.

Source: BSL BIOSERVICE Scientific Laboratories GmbH Planegg/Germany Study No.: 123515 10.07.2012

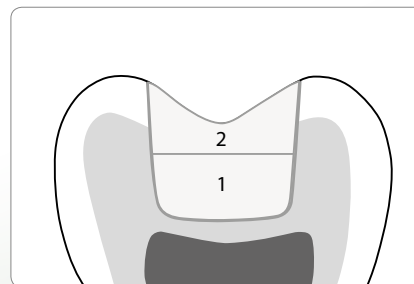
Schütz Dental vs. Competitors

Capo Bulk Fill plus



Capo Bulk Fill Plus (1) "one step filling"

(*Applies to the cavity class I.)



Conventional bulk fill material (1) with occlusal cover (2).

Physical properties

Physical data

	Mean value
3-point-strength (MPa)	134
Young's modulus (MPa)	11.090
Vickers hardness (MPa)	737
Compressive strength (MPa)	381
Radiopacity	210% Al
Filler content	77% by weight

Outstanding physical properties

Excellent flow behavior

High radiopacity



Highly aesthetic
up to 4 mm

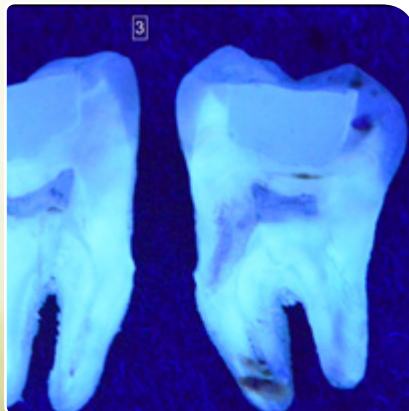
Order now!

Capo Bulk Fill Plus, 2 g

art. no.

232059

Order
your Capo
Bulk Fill Plus
now!



Case study

Replacement of a defective glass ionomer cement filling



"Capo Bulk Fill lets the filling adapt very well to the natural tooth color."

Author:

Dr. med. dent. Ellen Schulze, Wimmelburg/Germany

Initial situation



The 27 year old patient came to our practice with a broken filling made of glass ionomer cement. Tooth 36 showed a severe case of secondary caries.

Preparation and rubber dam



First, the affected area of the tooth is prepared and the softened dentin is removed. A rubber dam is placed around the tooth to avoid contamination with saliva.

Filling with Capo Bulk Fill



The tooth is cleaned and gently dried. Subsequently, the cavity is filled with Capo Bulk Fill composite. This material can be applied in layers with a thickness of up to 4 mm in one step, without using an elaborate layering technique. Nevertheless, I prefer to work in several steps when treating large cavities, as such a technique will help obtain an even better marginal stability. The highly viscous material guarantees an excellent adaption to the cavity and facilitates a safe and easy application.

Final result



Because of the extremely high filler content, the polymerization shrinkage of Capo Bulk Fill composite is exceptionally low. The restorations are easy to finish and to polish. The „chameleon effect“ of Capo Bulk Fill lets the filling adapt very well to the natural tooth color. The filling is virtually „hidden“ inside the mouth.

Note: This case study is not an instruction leaflet. Please adhere to the instructions provided with the material. The responsibility for the treatment remains with the attending dentist.

SCHÜTZ DENTAL

**3 in 1: Etching, Priming,
Bonding – all in one step!**

PrimeBond7

The Systhetics product line

Etching material, Primer and Bonder all combined in one material to be used directly in the patient's mouth.



Your benefits:

- Extremely tight and **lasting bond**
- **Quick and easy:** Etching material, Primer and Bonder all in one bottle.
- **Dependable and safe:** Excessive etching is impossible
- Forms an absolutely **homogeneous adhesive layer** to avoid „pooling“
- **Work neatly and avoid waste** with a very **precise dripper bottle**
- **Gentle etching** (pH-value > 2) reduces the risk of hypersensitivities
- **No refridgerator storage**
- Excellent biocompatibility, free of TEGDMA and free of MMA

art. no. 232007

Contact us

Schütz Dental GmbH, Germany

Phone	+49 (0) 6003 814-365
Fax	+49 (0) 6003 814-907
E-mail	export@schuetz-dental.de

**Visit Schütz Dental online now:
www.schuetz-dental.com**

We are here for you:
Dealer's stamp



Schütz Dental GmbH • Dieselstr. 5-6 • 61191 Rosbach/Germany • Tel. +49 (0) 6003 814-365 • Fax +49 (0) 6003 814-907
www.schuetz-dental.com • export@schuetz-dental.de